



General Catalogue

SHIMGE PUMP INDUSTRY (ZHEJIANG) CO., LTD.



Submersible pump & sewage pump

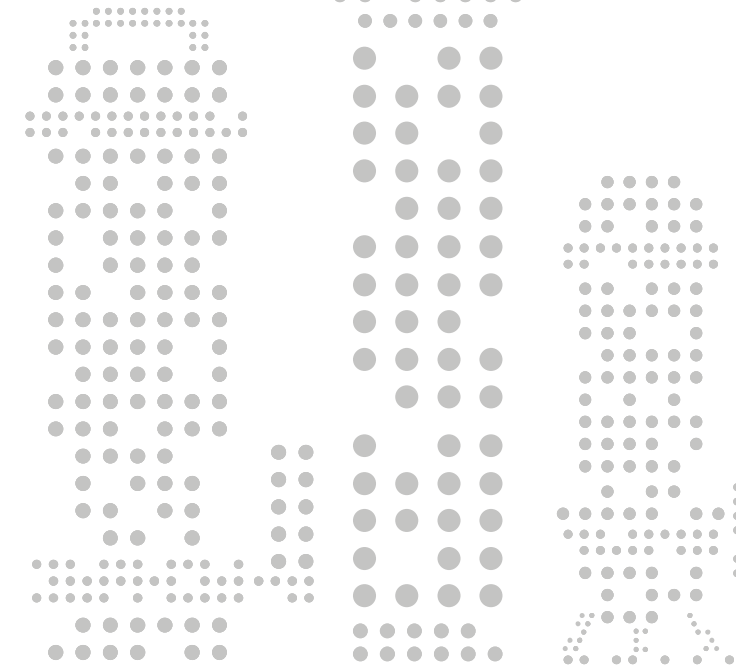
50Hz



Immediately join the Shimge Family by scanning:
<https://www.shimgepump.com>

SHIMGE PUMP INDUSTRY (ZHEJIANG) CO., LTD.

Add: Dayangcheng Industrial Zone, Daxi Town, Wenling City, Zhejiang Province, China
Tel: +86-576-86339960
Fax: +86-576-86337079
Email: admin@shimge.com



Submersible Sewage Pump



WQ(D)

Performance Range

Max. Flow: 140m³/h
Max. Head: 44m

Application Limits

- Maximum liquid temperature +40°C
- pH level from 4-10
- Maximum liquid density 1.2×10³ kg/m³
- Power frequency is 60Hz. Nominal voltage is 120VAC or 220VAC for single phase and 380VAC for three phase with the range from -10% to +10%.
- Immersion depth from 0.5m-5m

Certificate



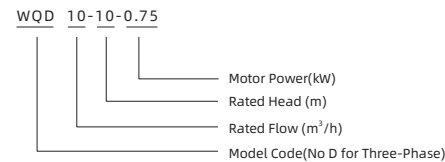
Application Fields

WQ(D) series pumps are widely applied in industry, agriculture, mining, construction, municipal, environmental protection, etc. They are suitable for draining watercontaining particles such as short fibers, paper scraps, etc. and soft solid, such as muddy water, dirty water, domestic wastewater, sewage, manure, etc. They are ideal equipment for agricultural irrigation and drainage, pool cleaning and site construction, but do not apply to the location with explosion-proof requirements.

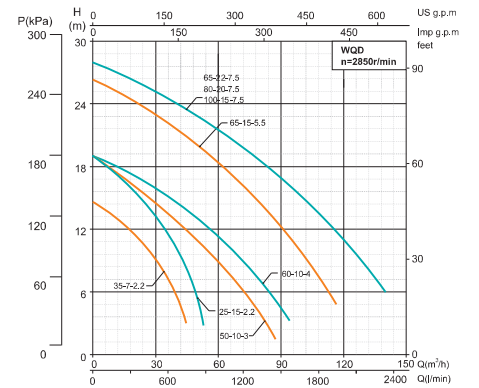
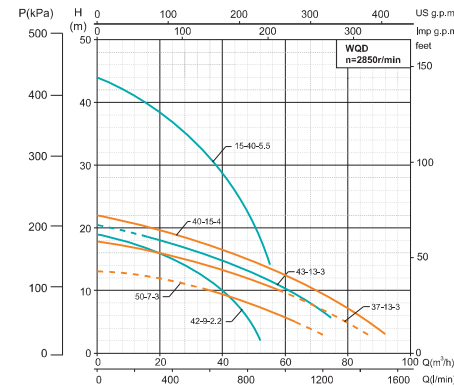
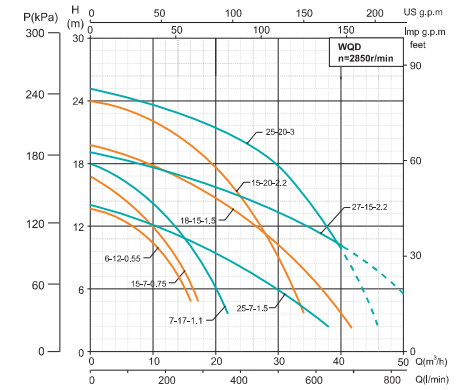
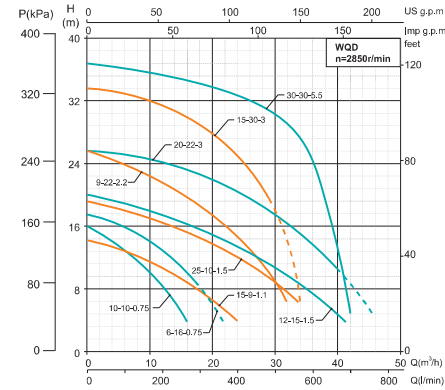
Features

- Wear-resistant whole cast iron parts design
- Double channel impeller, good flow capacity, excellent hydraulic performance
- The stainless steel shaft extension, carbide double sides mechanical sealing

Model Instruction



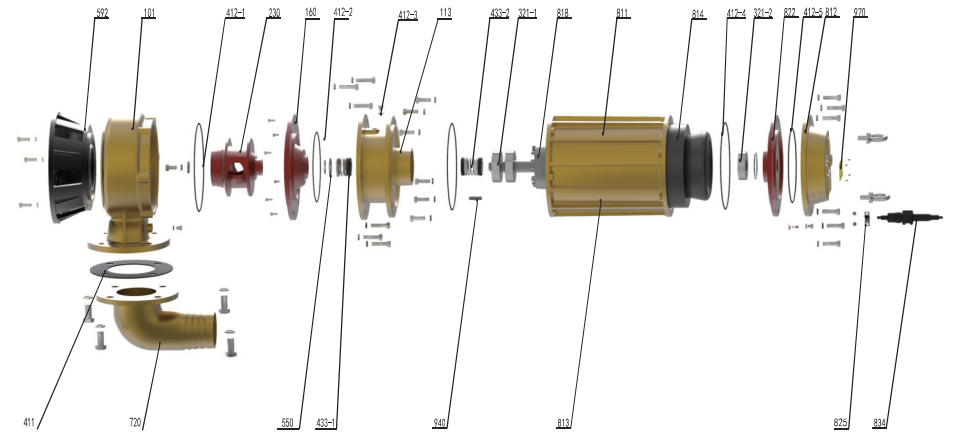
Performance Curve



| Model | | Power | | Rate Current (A) | Solids Passage (mm) | Max. Flow (m³/h) | Max. Head (m) | Head Range (m) | Cable line (m) | Dim. mm (L×W×H) | G. W (kg) | 20' Loading Qty. (pcs) |
|---------------|-------------------------|-------|------|------------------|---------------------|------------------|---------------|----------------|-----------------|-----------------|-----------|------------------------|
| Single-Phase | Three-Phase | kW | HP | | | | | | | | | |
| WQD6-12-0.55 | - | 0.55 | 0.75 | 4.1 | 20 | 17.5 | 15 | 14-0 | 3*0.75-8 | 470×250×235 | 20 | 1150 |
| WQD6-16-0.75 | - | 0.75 | 1 | 5.2 | 20 | 22 | 19 | 18-5 | 3*0.75-8 | 470×250×235 | 22 | 1150 |
| WQD6-16-0.75F | - | 0.75 | 1 | 5.2 | 20 | 22 | 19 | 18-5 | 3*0.75-8 | 470×250×235 | 22 | 1150 |
| WQD10-10-0.75 | - | 0.75 | 1 | 5.2 | 20 | 24 | 15 | 15-0 | 3*0.75-8 | 520×210×275 | 29 | 968 |
| WQD7-17-1.1 | - | 1.1 | 1.5 | 7.3 | 20 | 19 | 21 | 20-3 | 3*1-8 | 451×245×172 | 27 | 1150 |
| WQD15-9-1.1 | - | 1.1 | 1.5 | 7.3 | 20 | 25 | 14 | 14-0 | 3*1-8 | 540×240×280 | 32 | 968 |
| WQD6-12-0.55F | - | 0.55 | 0.75 | 4.1 | 20 | 17.5 | 15 | 14-0 | 3*0.75-8 | 470×250×235 | 20 | 1150 |
| - | WQ6-16-0.75 | 0.75 | 1 | 2 | 20 | 22 | 19 | 18-8 | 4*0.75-8 | 470×250×235 | 29 | 968 |
| - | WQ10-10-0.75 | 0.75 | 1 | 2 | 20 | 24 | 15 | 15-0 | 4*0.75-8 | 540×240×280 | 31 | 768 |
| - | WQ15-7-0.75 | 0.75 | 1 | 2 | 20 | 17 | 17 | 17-0 | 4*0.75-8 | 540×240×280 | 32 | 768 |
| - | WQ7-17-1.1 | 1.1 | 1.5 | 2.7 | 20 | 19 | 21 | 20-3 | 4*0.75-8 | 451×245×172 | 27 | 768 |
| - | WQ15-9-1.1 | 1.1 | 1.5 | 2.7 | 20 | 25 | 14 | 14-0 | 4*0.75-8 | 540×240×280 | 32 | 768 |
| - | WQ12-15-1.5 | 1.5 | 2 | 3.6 | 20 | 34 | 20 | 20-0 | 4*0.75-15 | 610×260×308 | 40 | 567 |
| - | WQ18-15-1.5 | 1.5 | 2 | 3.6 | 20 | 47 | 19 | 20-0 | 4*0.75-15 | 610×260×308 | 45 | 567 |
| - | WQ25-10-1.5 | 1.5 | 2 | 3.6 | 25 | 42 | 15 | 19-0 | 4*0.75-8 | 610×260×308 | 42 | 567 |
| - | WQ25-7-1.5 | 1.5 | 2 | 3.6 | 25 | 40 | 14 | 14-0 | 4*0.75-8 | 610×260×308 | 39 | 567 |
| - | WQ9-22-2.2 | 2.2 | 3 | 5.1 | 20 | 29 | 25 | 26-0 | 4*1-15 | 635×260×348 | 47 | 486 |
| - | WQ15-20-2.2 | 2.2 | 3 | 5.1 | 20 | 35 | 25 | 24-0 | 4*1-15 | 635×260×348 | 47.7 | 486 |
| - | WQ25-15-2.2 | 2.2 | 3 | 5.1 | 20 | 60 | 20 | 20-0 | 4*1-15 | 635×260×348 | 50 | 486 |
| - | WQ27-15-2.2 | 2.2 | 3 | 5.1 | 28 | 62 | 21 | 19-5 | 4*1-15 | 635×260×348 | 50 | 486 |
| - | WQ35-7-2.2 | 2.2 | 3 | 5.1 | 30 | 50 | 15 | 15-0 | 4*1-8 | 635×260×348 | 50 | 486 |
| - | WQ42-9-2.2 | 2.2 | 3 | 5.1 | 25 | 60 | 16 | 19-0 | 4*1-8 | 655×270×328 | 50 | 504 |
| - | WQ15-30-3 | 3 | 4 | 6.7 | 25 | 31 | 34 | 34-20 | 3*1.5+1*1-15 | 635×260×348 | 50 | 486 |
| - | WQ20-22-3 | 3 | 4 | 6.7 | 25 | 45 | 27 | 26-10 | 3*1.5+1*1-15 | 635×260×348 | 54 | 486 |
| - | WQ25-20-3 | 3 | 4 | 6.7 | 25 | 48 | 25 | 25-10 | 3*1.5+1*1-15 | 635×260×348 | 54 | 486 |
| - | WQ37-13-3 | 3 | 4 | 6.7 | 25 | 77 | 20 | 18-0 | 3*1.5+1*1-8 | 720×320×390 | 56.5 | 336 |
| - | WQ43-13-3 | 3 | 4 | 6.7 | 25 | 82 | 18.5 | 18-0 | 3*1.5+1*1-8 | 700×310×370 | 68 | 336 |
| - | WQ50-7-3 | 3 | 4 | 6.7 | 32 | 72 | 13 | 13-0 | 3*1.5+1*1-8 | 720×320×390 | 62 | 336 |
| - | WQ50-10-3 | 3 | 4 | 6.7 | 25 | 84 | 19 | 19-0 | 3*1.5+1*1-8 | 720×320×390 | 62 | 336 |
| - | WQ40-15-4 | 4 | 5.5 | 8.8 | 25 | 70 | 22 | 22-0 | 3*1.5+1*1-8 | 755×325×395 | 80 | 324 |
| - | WQ60-10-4 | 4 | 5.5 | 8.8 | 43 | 92 | 18 | 18-0 | 3*1.5+1*1-8 | 800×335×395 | 83 | 294 |
| - | WQ15-40-5.5 | 5.5 | 7.5 | 11.7 | 25 | 52 | 42.5 | 42.5-0 | 3*1.5+1*1 ☆ -8 | 755×325×395 | 85 | 324 |
| - | WQ30-30-5.5 | 5.5 | 7.5 | 11.7 | 25 | 39 | 37 | 37-0 | 3*1.5+1*1 ☆ -15 | 800×320×380 | 88 | 294 |
| - | WQ65-15-5.5 | 5.5 | 7.5 | 11.7 | 30 | 110 | 25 | 26-0 | 3*1.5+1*1 ☆ -8 | 1050×345×325 | 103 | 175 |
| - | WQ65-22-7.5 | 7.5 | 10 | 15.7 | 30 | 130 | 30 | 30-0 | 3×1.5+1×1 ☆ -15 | 870×400×470 | 130 | 120 |
| - | WQ80-20-7.5 | 7.5 | 10 | 15.7 | 30 | 130 | 30 | 30-0 | 3×1.5+1×1 ☆ -8 | 870×400×470 | 130 | 120 |
| - | WQ100-15-7.5 | 7.5 | 10 | 15.7 | 30 | 130 | 30 | 30-0 | 3×1.5+1×1 ☆ -8 | 870×400×470 | 130 | 120 |
| - | WQ6-16-0.75(415V/50Hz) | 0.75 | 1 | 1.8 | 20 | 22 | 19 | 18-5 | 4*0.75-8 | 470×250×235 | 21 | 1150 |
| - | WQ18-15-1.5(415V/50Hz) | 1.5 | 2 | 3.3 | 20 | 47 | 19 | 19-0 | 4*0.75-15 | 610×260×308 | 45 | 567 |
| - | WQ25-15-2.2(415V/50Hz) | 2.2 | 3 | 4.7 | 20 | 60 | 20 | 20-0 | 4*1-15 | 635×260×348 | 50 | 486 |
| - | WQ25-20-3(415V/50Hz) | 3 | 4 | 6.1 | 25 | 48 | 25 | 25-10 | 3*1.5+1*1-15 | 635×260×348 | 54 | 486 |
| - | WQ50-10-3(415V/50Hz) | 3 | 4 | 6.1 | 25 | 84 | 19 | 19-0 | 3*1.5+1*1-8 | 720×320×390 | 62 | 336 |
| - | WQ40-15-4(415V/50Hz) | 4 | 5.5 | 8.1 | 25 | 70 | 22 | 22-0 | 3*1.5+1*1-8 | 755×325×395 | 80 | 324 |
| - | WQ60-10-4(415V/50Hz) | 4 | 5.5 | 8.1 | 43 | 92 | 18 | 18-0 | 3*1.5+1*1-8 | 800×335×395 | 83 | 324 |
| - | WQ65-15-5.5(415V/50Hz) | 5.5 | 7.5 | 10.7 | 30 | 110 | 25 | 26-0 | 3*1.5+1*1 ☆ -8 | 1050×345×325 | 103 | 175 |
| - | WQ100-10-7.5(415V/50Hz) | 7.5 | 10 | 14.4 | 30 | 140 | 21 | 27-0 | 3*2.5+1*1.5-8 | 870×430×520 | 131 | 120 |

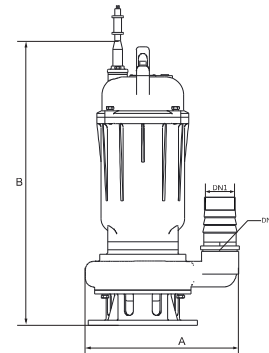
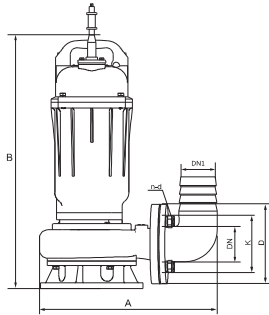
Centrifugal pumps are not recommended to be used less than the lift range.
 Note: Single-Phase:WQD6-12-0.55/WQD6-16-0.75/WQD6-16-0.75F is the honeycomb carton;
 Three-Phase:WQ6-16-0.75 is the honeycomb carton.The others are wooden cases.

Components & Materials



| No. | Part name | No. | Part name | No. | Part name |
|-------|--------------------------|-------|----------------------|-----|--------------------------|
| 101 | Pump body | 412-3 | O-ring | 812 | Head cover |
| 113 | Oil chamber cover | 412-4 | O-ring | 814 | Stator core with winding |
| 160 | Oil chamber cover | 412-5 | O-ring | 818 | Rotor |
| 230 | Impeller | 433-1 | Mechanical seal | 822 | Upper bearing block |
| 321-1 | Deep groove ball bearing | 433-2 | Mechanical seal | 825 | Cable pressing plate |
| 321-2 | Deep groove ball bearing | 550 | Mechanical seal ring | 834 | Cable sheath |
| 411 | Rubber washer | 592 | Base | 940 | Flat key |
| 412-1 | O-ring | 720 | Outlet joint | 970 | Nameplate |
| 412-2 | O-ring | 811 | Casing | | |

Dimensions & Weight



| Model | | Dim. (mm) | | | | | | | N.W. (kg) |
|---------------|-------------------------|-----------|-----|------|-----------------|-----|-----|-------|-----------|
| Single-Phase | Three-Phase | A | B | DN1 | DN | D | K | n-d | |
| WQD6-12-0.55 | - | 245 | 435 | 2" | | | | | 17.5/19 |
| WQD6-16-0.75 | - | 245 | 440 | 2" | G1½ Pipe Thread | | | | 20/21 |
| WQD6-16-0.75F | - | 245 | 440 | 2" | | | | | 20/21 |
| WQD10-10-0.75 | - | 312 | 440 | 2" | 2" | 140 | 110 | 4-M12 | 26 |
| WQD7-17-1.1 | - | 245 | 451 | 2" | G1½ Pipe Thread | | | | 28 |
| WQD15-9-1.1 | - | 285 | 454 | 2" | 2" | 140 | 110 | 4-M12 | 29 |
| WQD6-12-0.55F | - | 245 | 442 | 2" | | | | | 17.5/19 |
| - | WQ6-16-0.75 | 245 | 442 | 2" | G1½ Pipe Thread | | | | 20 |
| - | WQ10-10-0.75 | 312 | 440 | 2" | 2" | 140 | 110 | 4-M12 | 26 |
| - | WQ15-7-0.75 | 312 | 440 | 2" | | | | | 26 |
| - | WQ7-17-1.1 | 245 | 451 | 2" | G1½ Pipe Thread | | | | 28 |
| - | WQ15-9-1.1 | 316 | 468 | 2" | 2" | 140 | 110 | 4-M12 | 29 |
| - | WQ12-15-1.5 | 340 | 540 | 2" | 2" | 140 | 110 | 4-M12 | 36 |
| - | WQ18-15-1.5 | 347 | 540 | 2" | 2" | 140 | 110 | 4-M12 | 41 |
| - | WQ25-10-1.5 | 331 | 534 | 2" | 2" | 140 | 110 | 4-M12 | 38 |
| - | WQ25-7-1.5 | 344 | 498 | 2.5" | 2.5" | 160 | 130 | 4-M12 | 35 |
| - | WQ9-22-2.2 | 326 | 556 | 2" | 2" | 140 | 110 | 4-M12 | 42 |
| - | WQ15-20-2.2 | 341 | 556 | 2" | 2" | 140 | 110 | 4-M12 | 44 |
| - | WQ25-15-2.2 | 384 | 568 | 2.5" | 2.5" | 160 | 130 | 4-M12 | 45 |
| - | WQ27-15-2.2 | 367 | 568 | 2.5" | 2.5" | 160 | 130 | 4-M12 | 45 |
| - | WQ35-7-2.2 | 384 | 568 | 2.5" | 2.5" | 160 | 130 | 4-M12 | 45 |
| - | WQ42-9-2.2 | 376 | 594 | 2.5" | 2.5" | 160 | 130 | 4-M12 | 47 |
| - | WQ15-30-3 | 362 | 551 | 2" | 2" | 140 | 110 | 4-M12 | 48 |
| - | WQ20-22-3 | 360 | 554 | 2.5" | 2.5" | 160 | 130 | 4-M12 | 49 |
| - | WQ25-20-3 | 360 | 554 | 2.5" | 2.5" | 160 | 130 | 4-M12 | 49 |
| - | WQ37-13-3 | 399 | 602 | 2.5" | 2.5" | 160 | 130 | 4-M12 | 61 |
| - | WQ43-13-3 | 419 | 602 | 3" | 3" | 190 | 150 | 4-M16 | 61 |
| - | WQ50-7-3 | 419 | 602 | 3" | 3" | 190 | 150 | 4-M16 | 61 |
| - | WQ50-10-3 | 419 | 602 | 3" | 3" | 190 | 150 | 4-M16 | 55 |
| - | WQ40-15-4 | 371 | 661 | 3" | 3" | 190 | 150 | 4-M16 | 73 |
| - | WQ60-10-4 | 452 | 704 | 4" | 4" | 210 | 170 | 4-M16 | 75 |
| - | WQ15-40-5.5 | 411 | 745 | 2" | 2" | 140 | 110 | 4-M12 | 78 |
| - | WQ30-30-5.5 | 390 | 783 | 3" | 3" | 190 | 150 | 4-M16 | 80 |
| - | WQ65-15-5.5 | 452 | 826 | 4" | 4" | 210 | 170 | 4-M16 | 93 |
| - | WQ65-25-7.5 | 495 | 730 | 4" | 4" | 210 | 170 | 4-M16 | 117 |
| - | WQ80-20-7.5 | 495 | 730 | 4" | 4" | 210 | 170 | 4-M16 | 117 |
| - | WQ100-15-7.5 | 495 | 730 | 4" | 4" | 210 | 170 | 4-M16 | 117 |
| - | WQ6-16-0.75(415V/50Hz) | 247 | 438 | 2" | G1½ Pipe Thread | | | | 20 |
| - | WQ18-15-1.5(415V/50Hz) | 347 | 540 | 2" | 2" | 140 | 110 | 4-M12 | 41 |
| - | WQ25-15-2.2(415V/50Hz) | 384 | 568 | 2.5" | 2.5" | 160 | 130 | 4-M12 | 45 |
| - | WQ25-20-3(415V/50Hz) | 360 | 554 | 2.5" | 2.5" | 160 | 130 | 4-M12 | 49 |
| - | WQ50-10-3(415V/50Hz) | 419 | 602 | 3" | 3" | 190 | 150 | 4-M16 | 55 |
| - | WQ40-15-4(415V/50Hz) | 371 | 661 | 3" | 3" | 190 | 150 | 4-M16 | 73 |
| - | WQ60-10-4(415V/50Hz) | 371 | 704 | 4" | 4" | 210 | 170 | 4-M16 | 75 |
| - | WQ65-15-5.5(415V/50Hz) | 452 | 826 | 4" | 4" | 210 | 170 | 4-M16 | 93 |
| - | WQ100-10-7.5(415V/50Hz) | 562 | 733 | 4" | 4" | 210 | 170 | 4-M16 | 118 |